

▲ K Printing Proofer Gravure

High quality proofs using gravure, gravure-offset or flexo inks are produced instantly using the **K Printing Proofer**. Featuring electronically engraved printing plates and variable printing speeds of up to 40m/min, it is an essential tool for all those involved in the manufacturing or use of liquid inks. Ideal for R&D and computer color matching data, quality control and presentation samples. The **K Printing Proofer** is very easy to clean and all parts are solvent resistant.

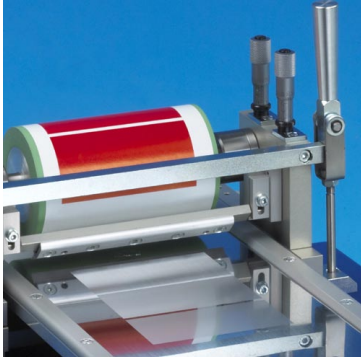


▲ Detail of K Printing Proofer Flexo Head

MAIN FEATURES

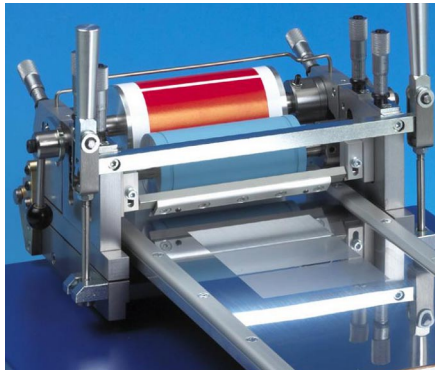
- Almost any flexible substrate can be printed or laminated
- Excellent printability ensured by micrometer control
- Multiple ink samples may be printed simultaneously for comparison purposes
- High printing speeds enable use of inks nearing press viscosity
- Easy to operate with a footprint of just 400 x 500mm (15.7 x 20 in)

GRAVURE



Ink is transferred from an electronically engraved printing plate directly onto the substrate, which is attached to the rubber impression roller. Doctor blade and roller adjustments are made via micrometers allowing repeatable settings for future tests.

FLEXO

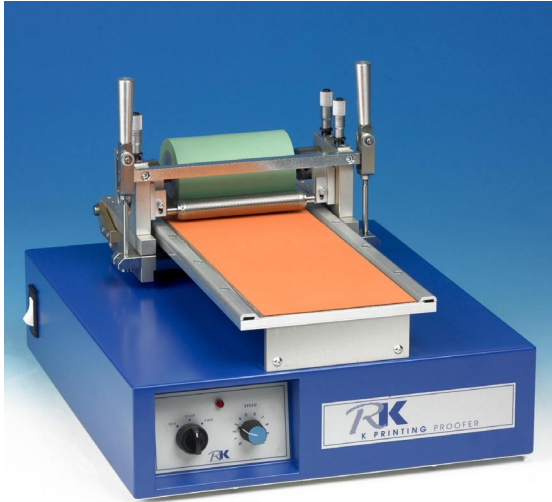


Using the flexo head, ink is transferred from the printing plate to a plain stereo roller and then onto the substrate. Adjustments are again made by micrometers. Plain or step wedge plates are available corresponding to the various densities required for flexo printing.

GRAVURE OFFSET



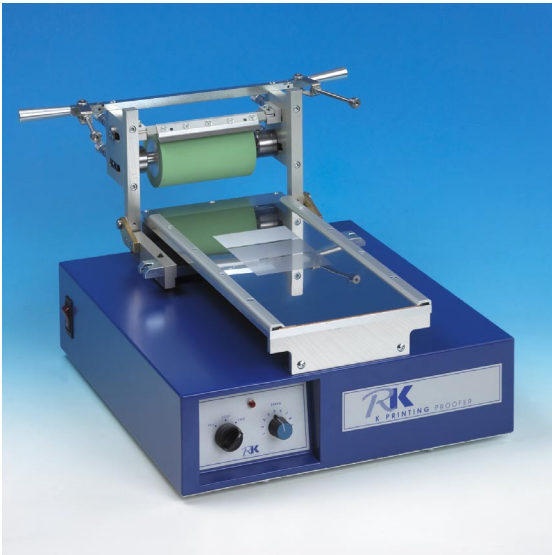
The flexo head is employed and fitted with a plain rubber roller to transfer ink from the plate to the substrate. A machine supplied with the flexo head can therefore be used for both techniques with the possible addition of an alternative stereo/offset roller and printing plate if required.



LAMINATING

Both wet and dry laminated samples can be produced on the machine using the gravure head with K-Lam laminating accessories. This includes a rubber covered bed and K-Lam bars, replacing the doctor blade in order to control adhesive coating weight. Adhesive is applied in front of the bar and the machine then coats and laminates in one operation.

Dry laminating is carried out in two phases. The adhesive is coated onto one substrate and after evaporation of the solvent, the second substrate is subsequently laminated to it.



CLEANING

The essential job of cleaning various machine components following each proofing run has been simplified by careful design. The illustration (left) shows the machine fitted with a gravure head pivoted back to the cleaning position. It can be seen that the printing plate, rollers and doctor blade are all exposed and easily accessible.

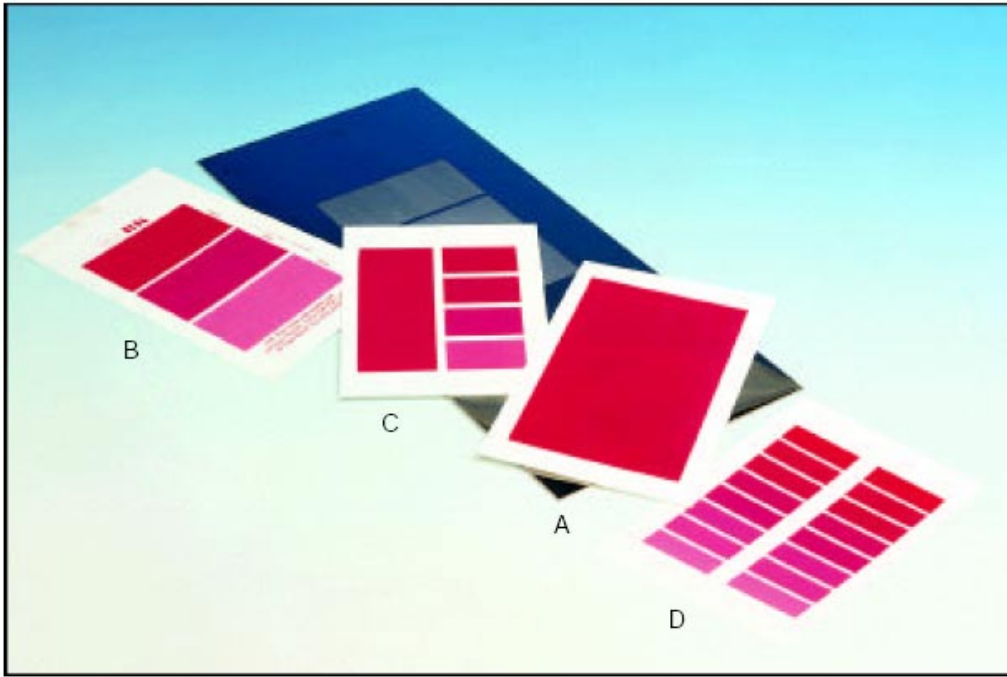
ACCESSORIES

The **K Printing Proofer** is available in various complete systems. Accessories include proofing paper having one gloss and one matt side in packs of 500 sheets, spare doctor blades (5 pack) and disposable plastic 3ml pipettes (500 pack).

SPECIFICATION

Combination Unit	includes Gravure and Flexo heads- 30-05-00
Gravure	30-03 series
Flexo	30-04 series
Weight	from 21 kgs (46 lbs)
Footprint	400 x 450 mm (16 in x 17 in)
Drives	Electrical (220/240 or 110/120 volts) or Pneumatic (Safe for hazardous areas)
Available Options	Gravure Offset Laminating

K PRINTING PROOFER



PRINTING PLATES

The illustration shows a typical plate together with various proofs obtained with standard plates, details of which are as follows:

- A** Solid Area Plates
100 lines/inch (40 lines/cm) Density: 100%
150 lines/inch (60 lines/cm) Density: 100%
200 lines/inch (80 lines/cm) Density: 60%
- B** Single 3 Wedge Plate
150 lines/inch (60 lines/cm) Density:
100-80-60%
Please note the proof shown has a typical company
logo and address added.
- C** 1 + 4 Wedge Plate
150 lines/inch (60 lines/cm).
Densities: Half area 90% and adjacent
step wedge 100-90-80-70%.
- D** Double 8 Wedge Plate
150 lines/inch (60 lines/cm)
Densities: 100-95-90-85-80-75-70-60%

Printing plates for use with the **Printing Proofer** are electronically engraved in exactly the same way as production cylinders. A choice of one or more of the standard plates available will normally be satisfactory but special plates including those with a logo and/or details can be supplied. Maximum engraved area 160 x 95mm (6.3 x 3.7 in)

ORDERING INFORMATION

PLEASE SPECIFY:

1. Type of drive - Electric or air
2. Printing heads and accessories
3. Services available - Power at 200/250 or 100/120

Main Headquarters

Testing Machines Inc.
40 McCullough Drive
New Castle, DE 19720
Tel: (302) 613-5600
Fax: (302) 613-5619
Info@testingmachines.com

Büchel BV
t/a Messmer Büchel
Fokkerstraat 24, 3905 KV
Veenendaal, Netherlands
Tel: +31 (0)318 521500
Fax: +31 (0)318 540358

**Lako Tool and
Manufacturing Inc.**
7400 Ponderosa Road
Perrysburg, Ohio 43552
Tel: (419) 662-5256
Fax: (419) 662-8225

Lawson Hemphill
1658 G A R Highway
Swansea, MA 02777
Tel: (508) 679-5364
Fax: (508) 679-5396
Information@
lawsonhemphill.com

Adamel Lhomargy SARL
Z.A. de l'Habitat, Bâtiment 6
Route d'Ozoir, 77680
Roissy en Brie, France
Tel: +33 (0) 1 64402910
Fax: +33 (0) 1 64409211

TMI Canada
40 McCullough Drive
New Castle, DE 19720
Tel: (302) 613-5600
Fax: (302) 613-5619
canada@testingmachines.com



www.testingmachines.com

www.lakotool.com

www.lawsonhemphill.com